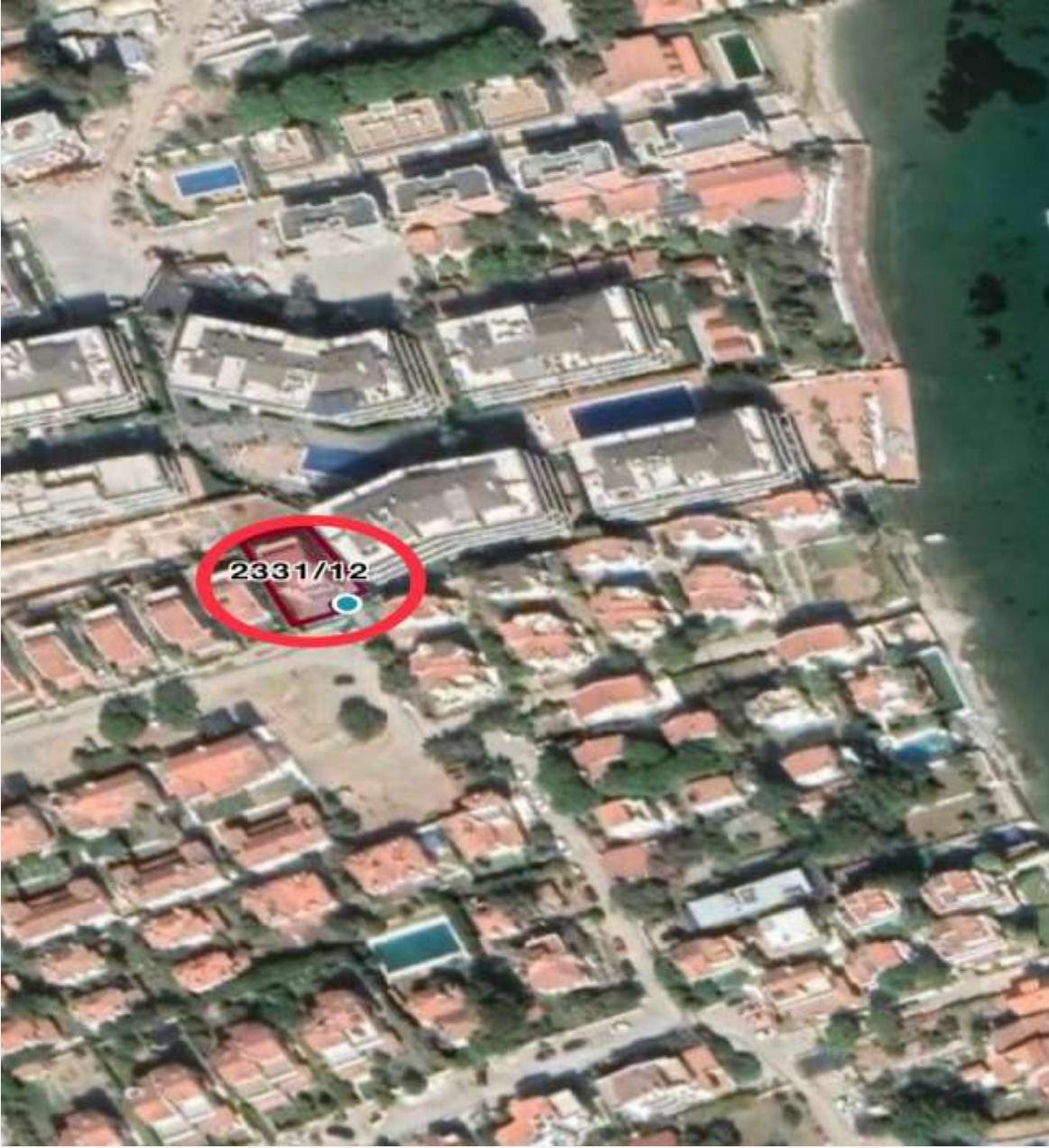
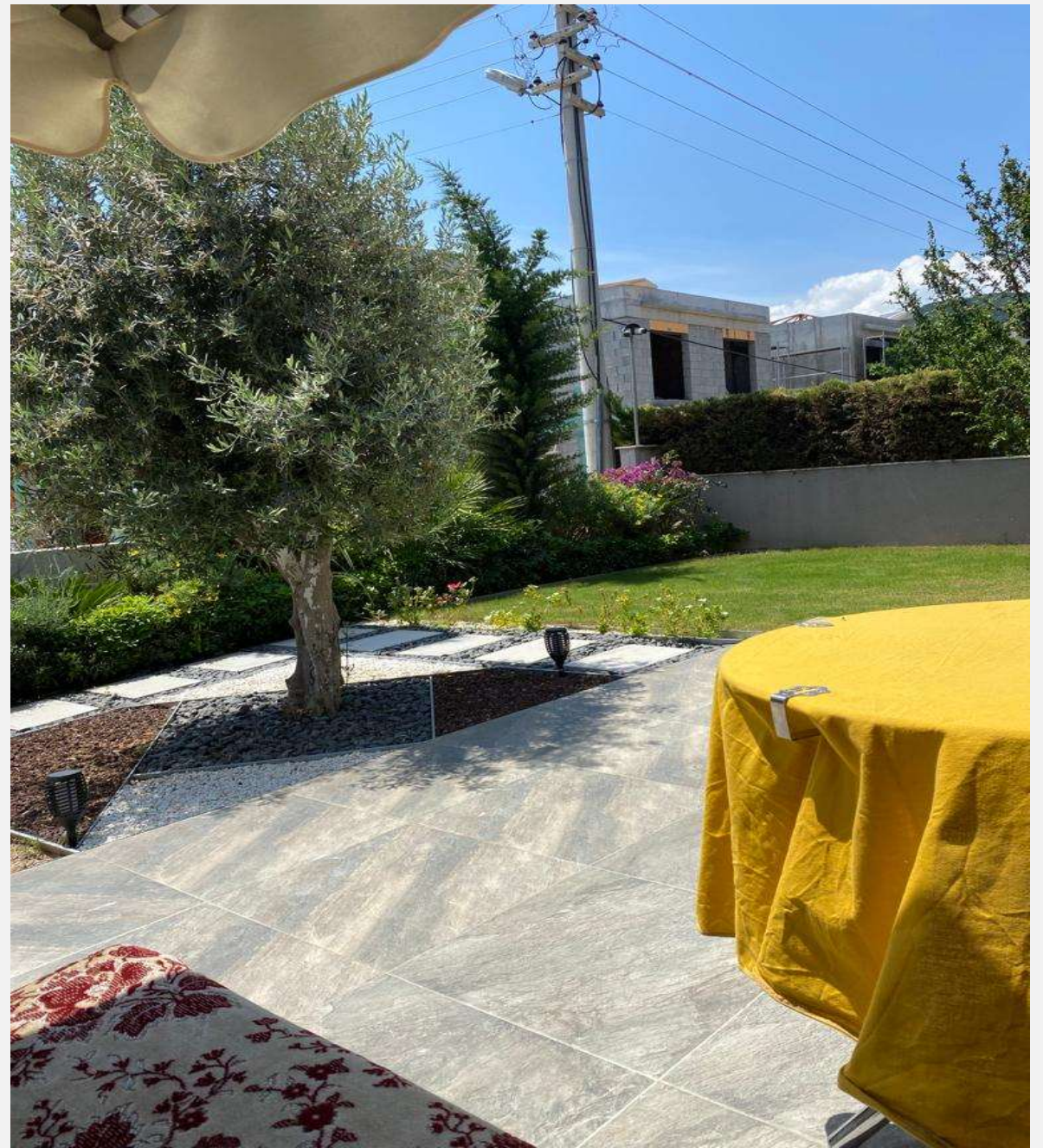


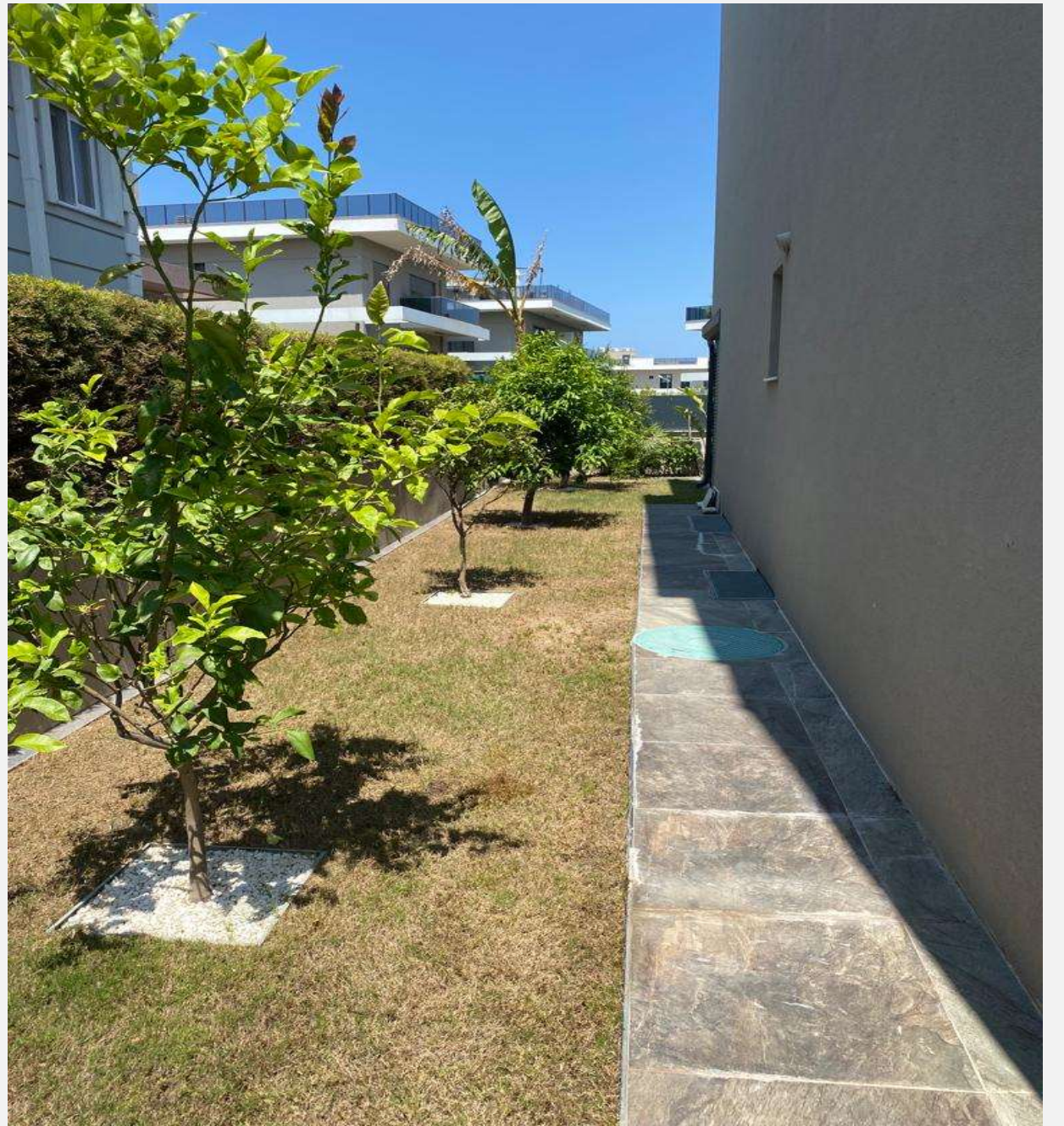
# URLA GÜVENDİK MÜSTAKİL EV



Öz nitelik Bilgisi	
Öz nitelik Bilgisi	Bina/BB Listesi
Taşınmaz No	20306171080
İl	İzmir
İlçe	Urla
Mahalle/Köy	Güvendik
Ada	2331
Parsel	12
Tapu Alanı	334,02
Nitelik	Arsa
Mevkii	Ören
Zemin Tipi	Ana Taşınmaz
Pafta	L17-A-10-C-3-D, L17-A-10-C

Favorilere ekle





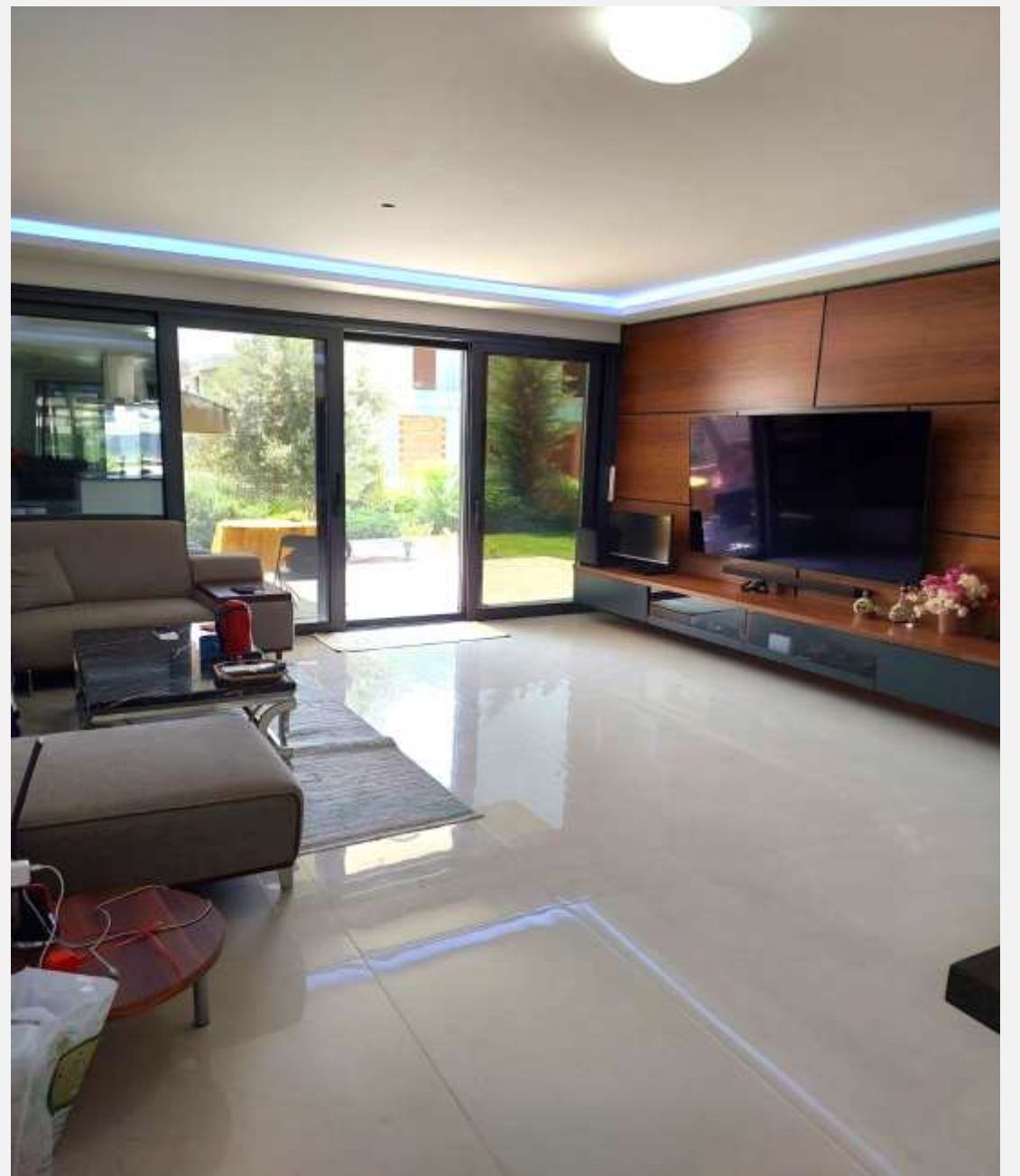


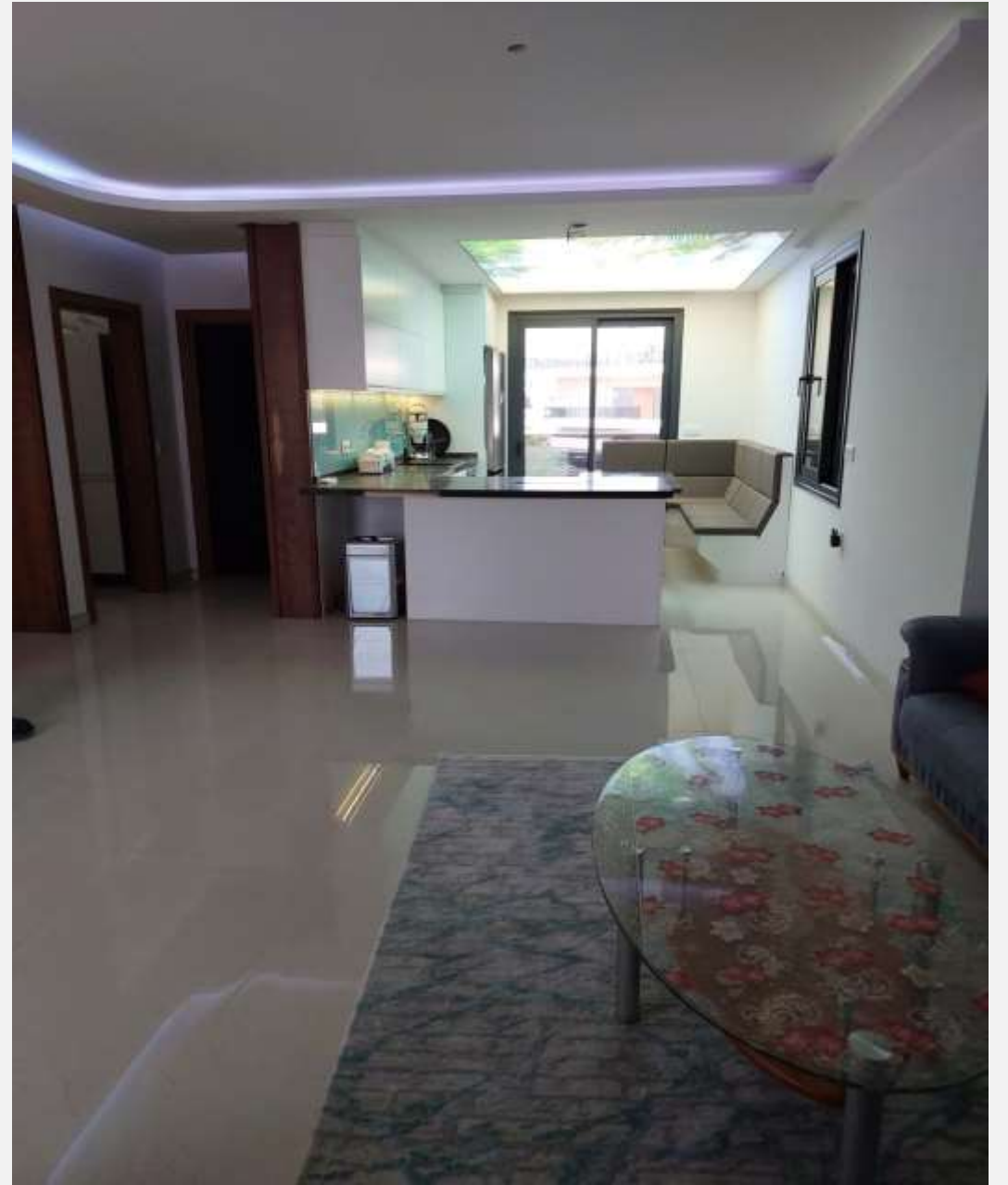






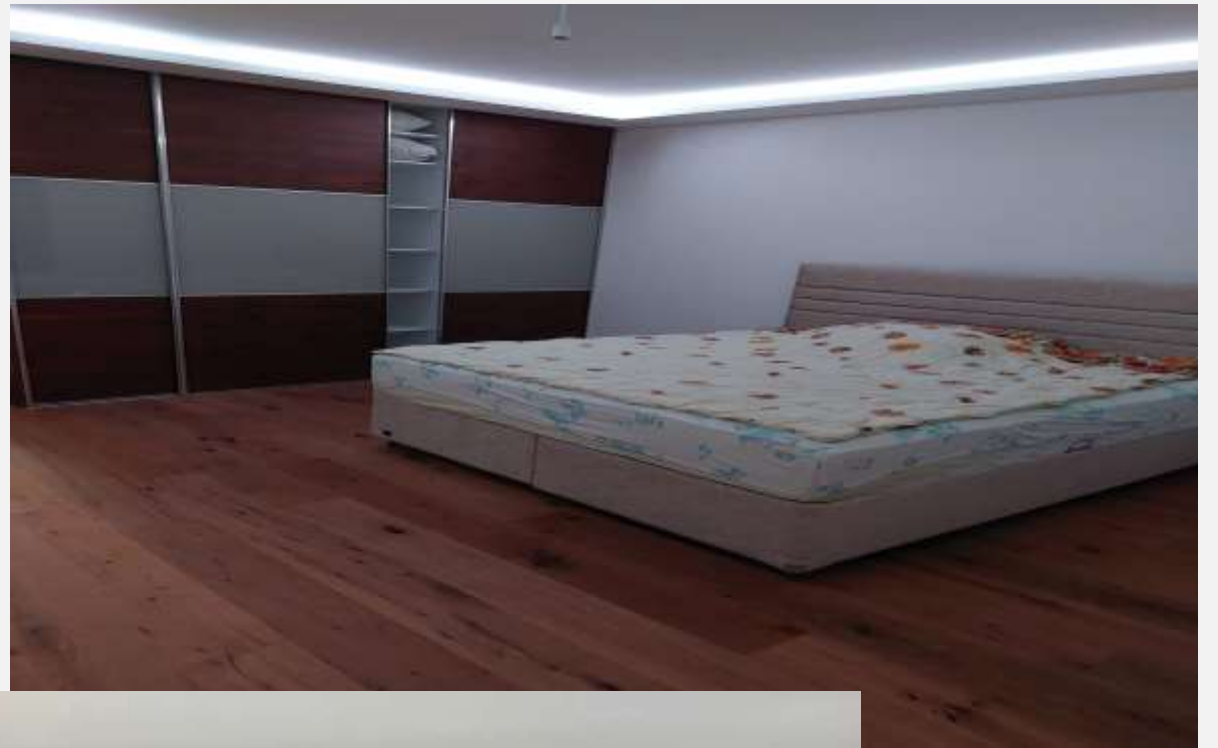




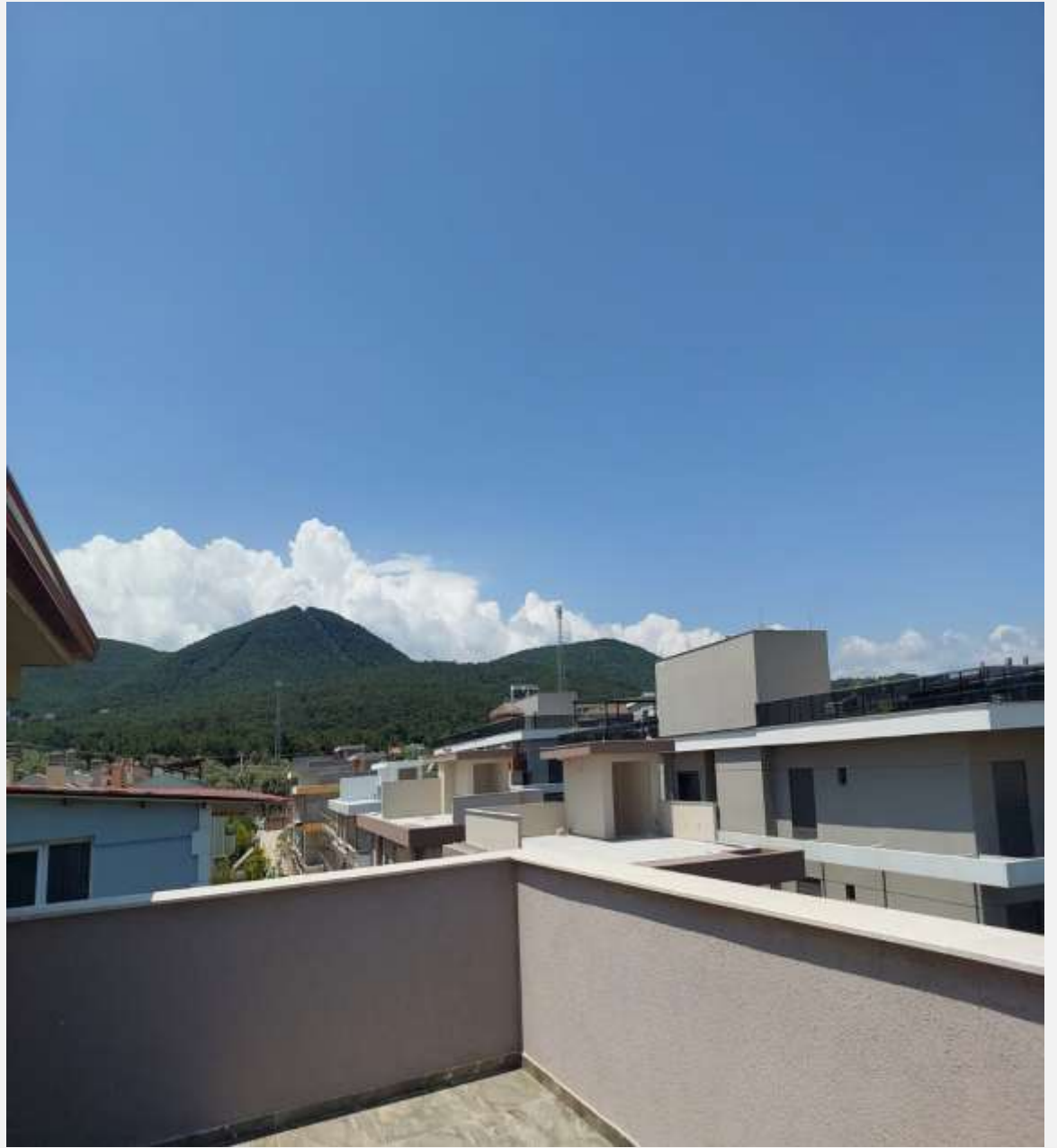
















# ÖZ NİTELİK

- Toplam arsa alanı 334 metre kare,
- 300 metre kare kapalı inşaat alanı,
- 3 kat + çatı katı,
- 3 salon + 5 oda + 2 açık mutfak + 4 banyo, WC + her katta bir balkon ve teras,
- 20 metre kare açılır kapanır, yaz kış kullanıma uygun havuz,
- Yerden ısıtma sistemi,
- 4 güneş enerji paneli, sıcak su deposu,
- 2 Toshiba klima,
- Geniş bir bahçe alanı.

BURHAN UÇAN



İSKELE MAHALLESİ MİTATPAŞA CAD.  
NO:90/1 URLA / İZMİR  
0532 540 77 27